

Focus on Mental Health





High Absorption Curcumin



CuraMed ENHANCED ABSORPTION Curcumin

- MORE than curcumin. Only patented delivery system with turmeric essential oils and ar-turmerone
- 50+ patents world-wide
- Over 90 published studies including 41 human clinical trials
- Free of harmful solvents
- Sustainably produced and ethically acquired
- **500 mg of full spectrum curcumin in the 750 mg softgel:** (curcumin, demethoxycurcumin, bisdemethoxycurcumin) with superior absorption versus standard curcumin



Saffron and Curcumin



Proprietary Combination

- **Saffron EP15**

- Marketing Use Study: 4 out of 5 users find Saffron EP15 effective; 60% report beneficial results for mood in two weeks or less

- **BCM-95[®] Curcumin**

- Multiple clinical trials find beneficial effects for mood and mental health



Saffron Lift formulated to match dosage and standardization that generated positive results in a recent clinical trial.

Saffron Lift + Curcumin

- **Proprietary blend of saffron/curcumin**
 - **Saffron (EP15)** from a patented extraction method to preserve full spectrum of active compounds
 - Benefits for mood in two weeks or less
 - BCM-95 curcumin has over 85 published studies including several on mood and mental function*
- **Clinically proven dosage**
- **Supports healthy neurotransmitter levels***

Recommendations: Take 1 capsule twice daily.

*These statements have not been evaluated by the Food and Drug Administration. This product is not intended to diagnose, treat, cure or prevent any disease.



SUPPLEMENT FACTS

Serving Size: 1 Capsule

Servings Per Container: 60

Amount Per 1 Capsule (Veg):	%DV
-----------------------------	-----

Curcumin (<i>Curcuma longa</i>)	250 mg	**
Rhizome Extract (BCM-95®/Curcugreen®)		
enhanced with turmeric essential oil and standardized for curcuminoid complex (curcumin, demethoxycurcumin and bisdemethoxycurcumin), supplying 215 mg of pure curcuminoids		

Saffron (<i>Crocus sativus</i>)	15 mg	**
Stigma Extract (EP15™)		

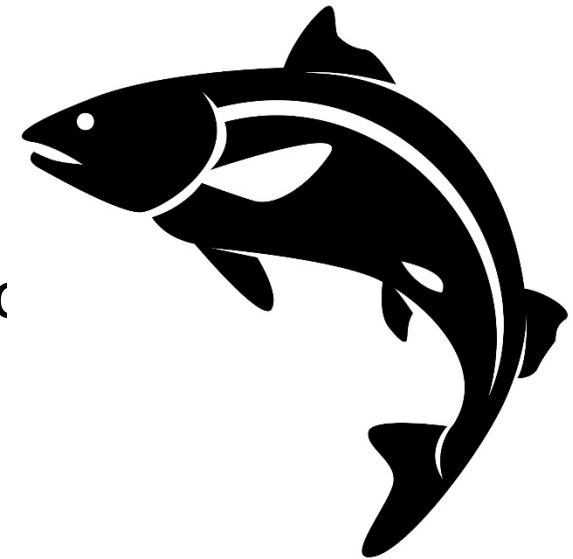
**Daily Value (DV) not established.

Solid Dose Omega-3



DHA for the Brain

- Omega fatty acids are the building blocks of cells, especially in the brain
 - 60% of the brain is fat
 - **90% of the omega-3** content of the brain is **DHA omega-3**
- Recent study reports that long-term use (4 months or more) is required before maximum benefits are perceived



True or False: Vectomega is from Fish Oil



Vectomega

Omega-3 Fatty Acid Complex from Salmon

- **The Smart Choice!**

- Better than fish or krill oil
- Great stability = zero rancidity
- No concerns with toxins, heavy metals or contaminants

- **Bioidentical Omega 3s plus phospholipids**

- EPA and DHA in original positions
- Chemical-free extraction uses only water and enzymes

- **Consumers Love It!**

- Just 1 or 2 tablets or capsules per day
- No fish burps or aftertaste



SUPPLEMENT FACTS

Serving Size: 1 Capsule
Servings Per Container: 60

Amount Per 1 Capsule (Veg):	%DV
-----------------------------	-----

Omega-3 Phospholipid	214 mg	**
Peptide Complex		

Featuring Phospholipids, Omega-3 [DHA (docosahexaenoic acid) and EPA (eicosapentaenoic acid)] and bioactive peptides extracted from Atlantic Salmon (*Salmo salar*), in a balanced ratio as found in salmon; not chemically altered or artificially spiked with DHA/EPA

**Daily Value (DV) Not Established

SUPPLEMENT FACTS

Serving Size: 1 Tablet
Servings Per Container: 60

Amount Per 1 Tablet:	%DV
----------------------	-----

Omega-3 Phospholipid	292 mg	**
Peptide Complex		

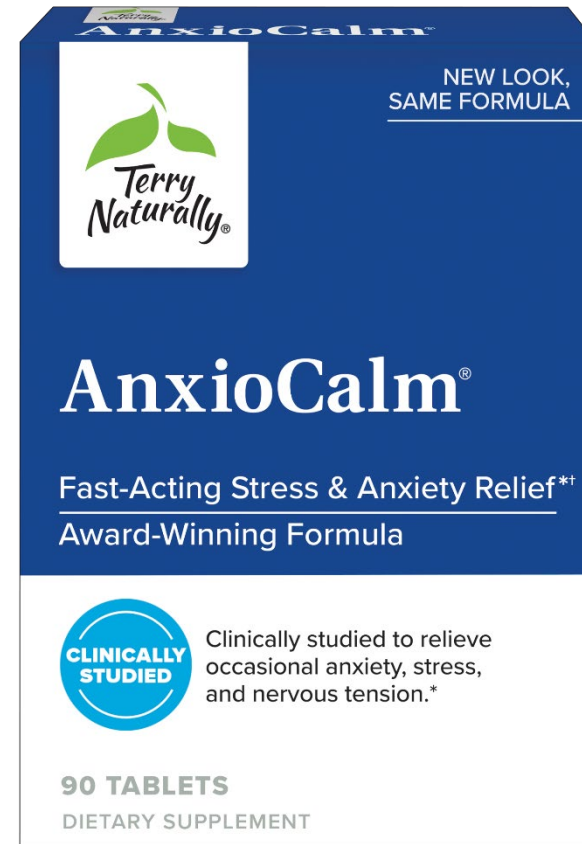
Featuring Phospholipids, Omega-3 [DHA (docosahexaenoic acid) and EPA (eicosapentaenoic acid)] and bioactive peptides extracted from Atlantic Salmon (*Salmo salar*), in a balanced ratio as found in salmon; not chemically altered or artificially spiked with DHA/EPA

**Daily Value (DV) Not Established

Recommendations: 1 tablet or capsule daily, may increase to 1 tablet or capsule twice daily for additional support.



Fast Relief for Anxiety*†



† Relieves occasional anxiety and stress

*These statements have not been evaluated by the Food and Drug Administration. This product is not intended to diagnose, treat, cure or prevent disease.

Clinically Proven Results

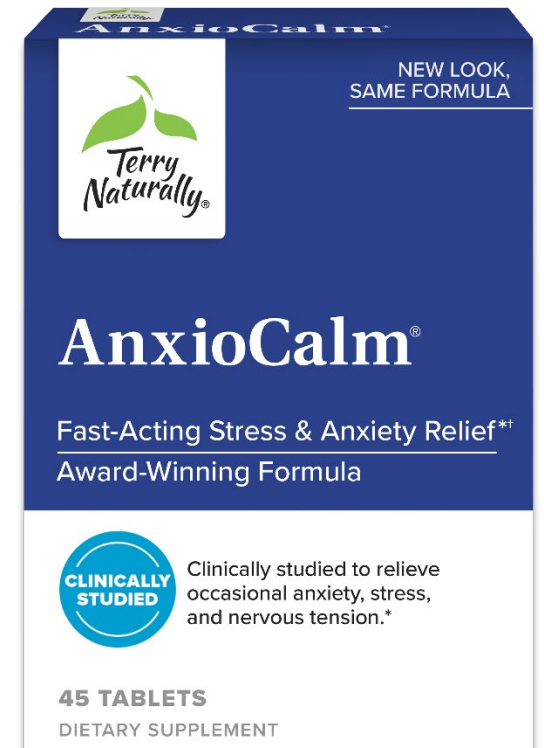
Seven published studies including 3 human clinical trials



- **Effects on the first day** – results improve with continued use
- **No significant adverse effects** – safe for kids!
- **No known interactions** with prescription anti-anxiety medications

How to Recommend and Use

- Effectively relieves anxiety and nervous tension
- Use short-term or take daily for on-going support
 - Travel
 - Work
 - School
 - Any situation that increases anxiety and stress!
- Take before bedtime for more restful sleep



† Relieves occasional anxiety and stress

*These statements have not been evaluated by the Food and Drug Administration. This product is not intended to diagnose, treat, cure or prevent disease.

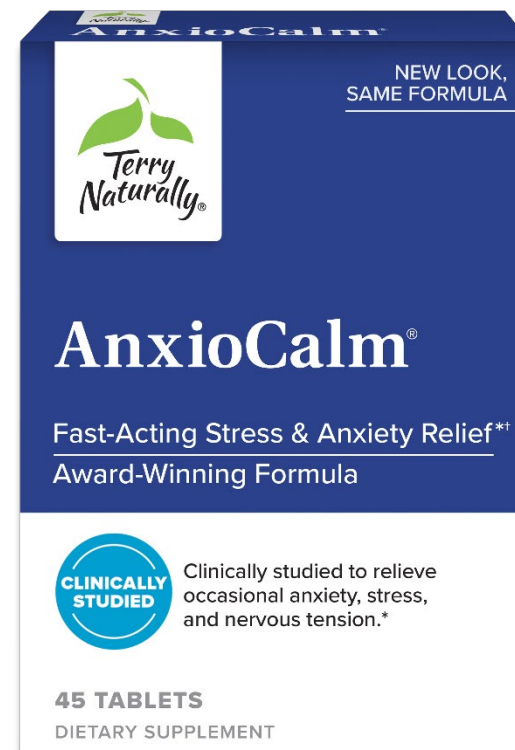


AnxioCalm

*Relief of occasional anxiety, stress, restless sleep, and nervous tension**

- **Fast-acting**
 - Results the first day, best effects after a week of use*
- **Primary mechanism of action: support for the endocannabinoid system**
- **No drowsiness**
- **Clinically proven benefits**
 - After one day of AnxioCalm use, participants experienced a *significant* reduction on an anxiety measurement scale, which increased to a 25% reduction by day 7*

**A Terry Naturally®
Top 10 Product!**



SUPPLEMENT FACTS

Serving Size: 2 Tablets

Servings Per Container: 22

Amount Per 2 Tablets:	%DV
-----------------------	-----

Narrow-leaved Coneflower 40 mg	**
(Echinacea angustifolia) Root Extract (EP107™) standardized for echinacoside and a unique, proprietary alkamide profile	

**Daily Value not established

Recommendations: Adults: 1 or 2 tablets twice daily. May take at bedtime to support restful sleep.*

Children (ages 4-12): 1 tablet twice daily.

† Relieves occasional anxiety and stress

*These statements have not been evaluated by the Food and Drug Administration. This product is not intended to diagnose, treat, cure or prevent disease.

**Once Daily
St John's Wort**

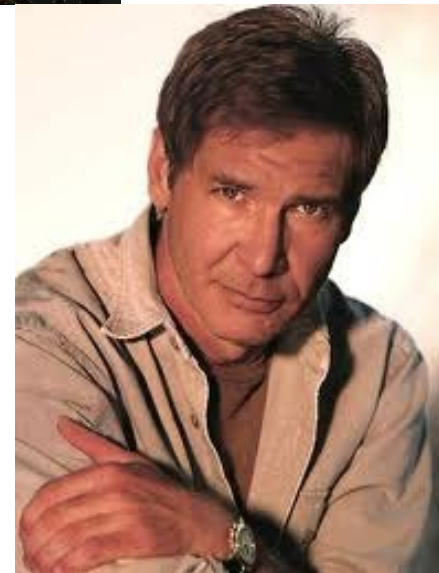
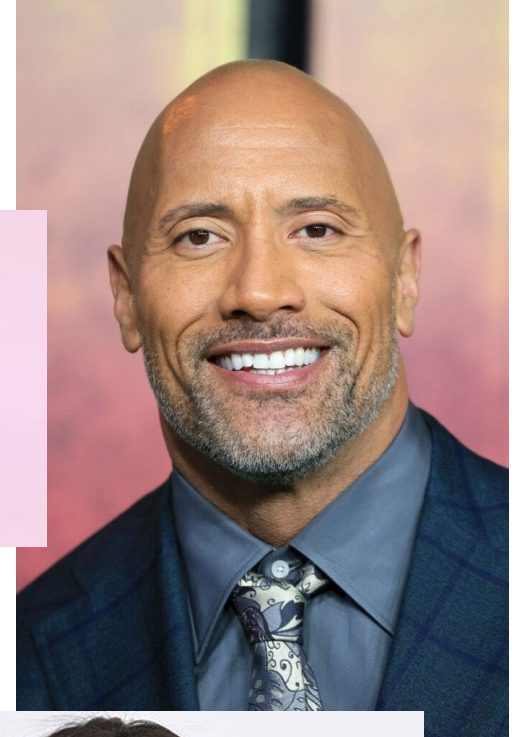


Dosage and Safety

- Clinically tested dose is 900 mg daily
- Does NOT need to be taken in divided doses – 900 mg once a day is effective
- St John's wort may interact with monoamine oxidase inhibitors (MAO or MAOI) or other drugs



Anyone Look Familiar?



St John's Wort 900

- **Once daily dosing**
 - Clinical proven daily dose in one tablet daily
 - Better compliance = Better Results
- **Standardized extract** to the recommended compound, hypericin
- **St John's wort has been used for decades for positive mood and emotional health***



SUPPLEMENT FACTS

Serving Size: 1 Tablet
Servings Per Container: 60

Amount Per 1 Tablet:		%DV
Total Carbohydrate	< 1 g	< 1% [†]
St. John's wort	900 mg	**
(Hypericum perforatum) Aerial Extract (EP900™) standardized to contain ≥ 0.3% hypericin		

**Daily Value (DV) not established.

[†]Percent Daily Values (DV) are based on a 2,000 calorie diet.

Recommendations: 1 tablet daily in the morning. Results improve with continued use.

*These statements have not been evaluated by the Food and Drug Administration. This product is not intended to diagnose, treat, cure or prevent any disease.