

A Deep Dive on: Blood Sugar Support

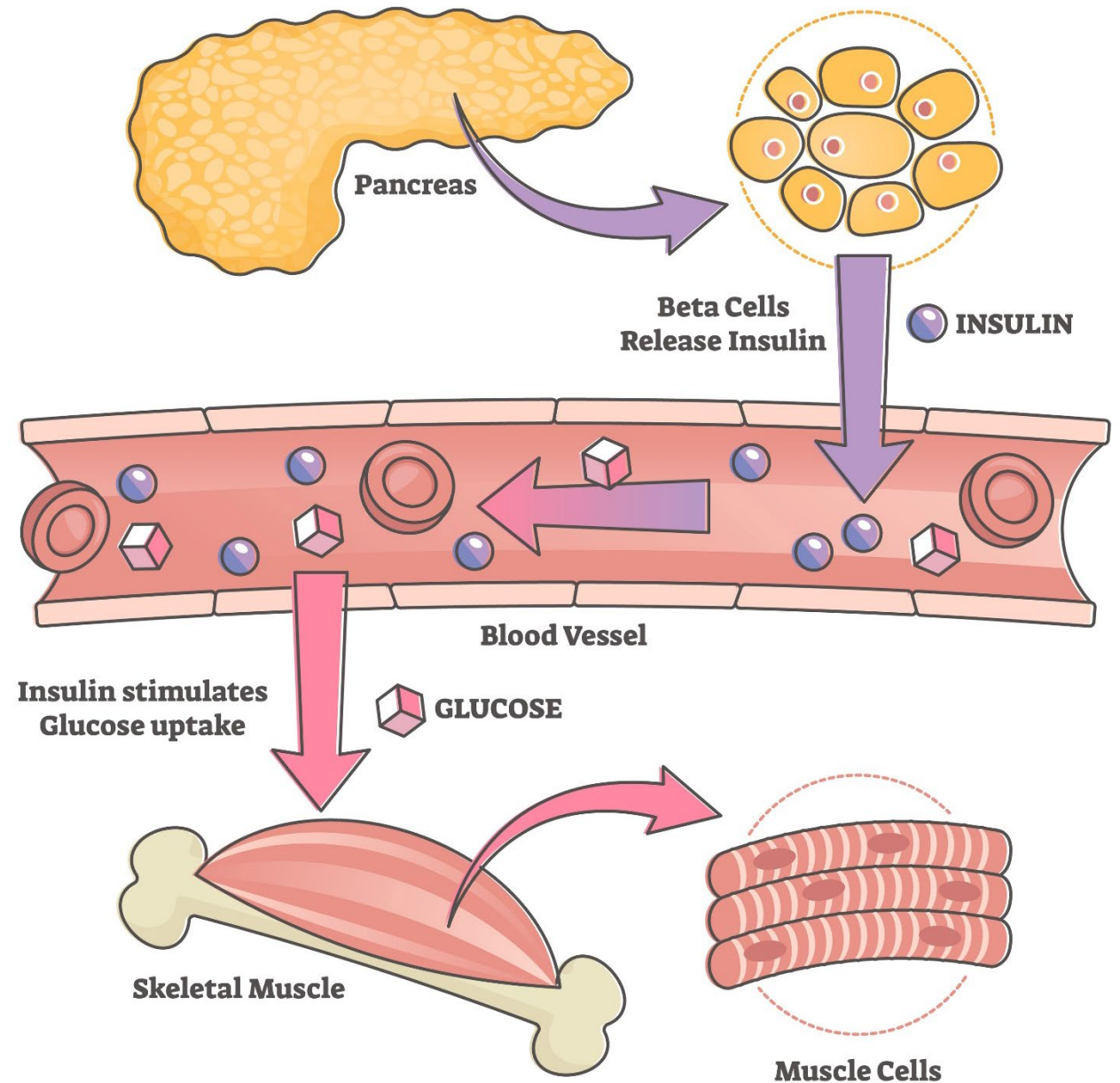


Blood Sugar Levels

Refresher: What is Insulin?

Insulin is a hormone
secreted by the pancreas

Insulin moves fuel [in the
form of glucose] from the
bloodstream into cells to be
burned for energy





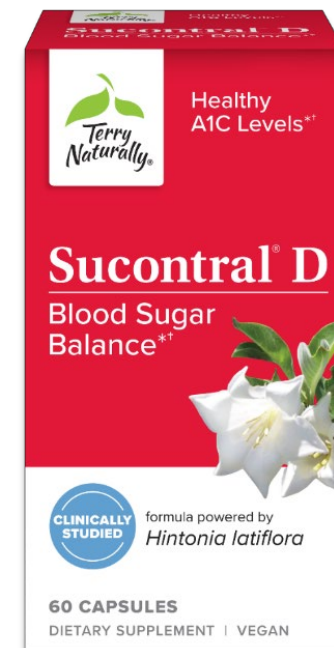
Sucontral[®] D

- Terry Naturally[®] exclusive – nothing else like it on the market
- Clinically proven: over 70 years of research
- Side benefits: supports healthy cholesterol and triglyceride balance^{*†}
 - Healthy insulin function
 - Healthy A1C levels[†]
 - Carbohydrate metabolism
 - Blood sugar levels^{*†}

[†]Supports healthy levels already within normal range

Recommendations: 1 capsule, twice daily. May increase to 1 capsule, three times daily for advanced support.

*These statements have not been evaluated by the Food and Drug Administration. This product is not intended to diagnose, treat, cure or prevent any disease.



SUPPLEMENT FACTS

Serving Size: 1 Capsule

Servings Per Container: 60

Amount Per 1 Capsule (Veg):		%DV
Vitamin C (as ascorbic acid)	30 mg	33%
Vitamin E (as d-alpha tocopherol acetate)	5 mg (7.5 IU)	33%
Thiamin (Vitamin B1) (as thiamin HCl)	0.7 mg	58%
Riboflavin (Vitamin B2)	0.8 mg	62%
Vitamin B6 (as pyridoxine HCl)	1 mg	59%
Folate	170 mcg DFE (100 mcg folic acid)	43%
Vitamin B12 (as cyanocobalamin)	0.5 mcg	21%
Biotin	50 mcg	167%
Zinc (from zinc acetate)	5 mg	45%
Chromium (from chromium chloride)	25 mcg	71%

Copalchi (*Hintonia latiflora*) Bark Extract (2-4:1) 100 mg
providing 20 mg of polyphenols

**Daily Value not established



Healthy Feet & Nerves

*supports healthy nerve function in the feet and throughout the body**

- **Supports key areas for healthy nerve function***
 - Blood sugar metabolism*
 - Circulation*
- **Bioactive Bs and Chelated minerals**
 - Active B6, B12 and folate – no conversion by the liver necessary
 - Mineral chelates for optimal absorption
- **High dose alpha lipoic acid**
 - 600 mg per 4 capsules
 - Clinically studied dosage level

Recommendations: 2 capsules twice daily.

*These statements have not been evaluated by the Food and Drug Administration. This product is not intended to diagnose, treat, cure or prevent any disease.



SUPPLEMENT FACTS

Serving Size: 2 Capsules
Servings Per Container: 30

Amount Per 2 Capsules (Veg):	%DV
Thiamin (B1) (from thiamin HCl)	25 mg 2,083%
Riboflavin (vitamin B2)	25 mg 1,923%
Niacin (as niacinamide)	10 mg 63%
Vitamin B6 (as pyridoxal-5-phosphate)	30 mg 1,765%
Folate (from (6S)-5 methyltetrahydrofolic acid, glucosamine salt) [†]	425 mcg DFE (250 mcg) 106%
Vitamin B12 (as methylcobalamin)	500 mcg 20,833%
Biotin (as d-biotin)	1,000 mcg 3,333%
Pantothenic Acid (from d-calcium pantothenate)	200 mg 4,000%
Zinc (from TRAACS™ zinc glycinate chelate)	10 mg 91%
Chromium (from TRAACS™ chromium nicotinate glycinate chelate)	200 mcg 571%
Alpha Lipoic Acid	300 mg **
Boswellia (<i>Boswellia serrata</i>) Gum Resin Extract (BOS-10®) standardized to contain ≥ 70% total organic and boswellic acids with AKBA ≥ 10%, with ≤ 5% beta-boswellic acids	100 mg **
Benfotiamine	50 mg **

**Daily Value (DV) not established.

[†]US Patent No. 7,947,662

How to Use Berberine

Standard dosage 500 mg, 3x daily

Berberine challenges:

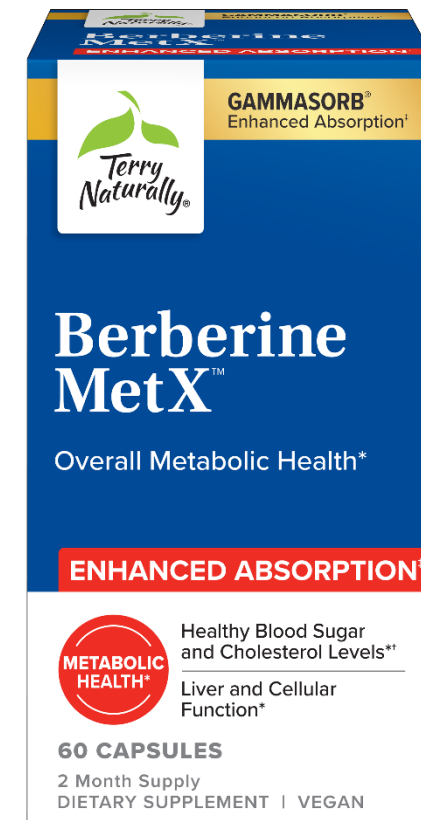
- Limited absorption/poor bioavailability
- Poor water solubility

For enhanced effects, 250 mg combined with gamma cyclodextrin

- Berberine with a gamma cyclodextrin formulation showed double the benefits

Berberine MetX Ultra Absorption

- High quality berberine extract Formulated with GammaSorb™- shown to boost nutrient absorption; allows for a lower dose
- Just one daily for heart, brain, liver, cellular, and metabolic health*
- Formulated with GammaSorb for enhanced absorption



SUPPLEMENT FACTS

Serving Size: 1 Capsule

Servings Per Container: 60

Amount Per 1 Capsule (Veg):		%DV
Berberine	250 mg	**
[from Phellodendron (<i>Phellodendron amurense</i>) Bark Extract]		

**Daily Value (DV) not established.

Recommendations: 1 capsule daily

*These statements have not been evaluated by the Food and Drug Administration. This product is not intended to diagnose, treat, cure or prevent any disease.



CuraMed Family

Softgel

- 750 mg: 500 mg curcuminoids
- 375 mg: 250 mg curcuminoids

Capsule_v

- 500 mg: 430 mg curcuminoids

Syrup_v

- 212 mg curcuminoids
- **Kids and those with difficulty swallowing**

Chewable_v

- 100mg: 45 mg curcuminoids
- **Great for Kids**



Red Sage Plus

- **Combination of two ultra-clean ingredients from hydroponic cultivation:**
 - HRS65 red sage [danshen]
 - HRG80 red ginseng
- **Whole root, not an extract**
- **Verified never adulterated, grown without pesticides**
- **Heart-focused formula**
 - Healthy blood flow and circulation
 - Healthy blood vessels and arteries *

Recommendations: 1 capsule daily. May take one capsule, two to four times daily, for additional support.

*These statements have not been evaluated by the Food and Drug Administration. This product is not intended to diagnose, treat, cure or prevent any disease.



SUPPLEMENT FACTS		
Serving Size: 1 Capsule		
Servings Per Container: 30		
Amount Per 1 Capsule (Veg):		%DV
Red Sage (<i>Salvia miltiorrhiza</i>) Root Powder (HRS65™)	100 mg	**
Korean Red Ginseng (<i>Panax ginseng</i>) Root Powder (HRG80™) containing rare, noble ginsenosides	100 mg	**
**Daily Value (DV) not established.		



Clinical OPC

- Always grape seed, never adulterated!
- Standardized to contain $\geq 99\%$ polyphenols and $\geq 80\%$ absorbable OPCs
- Seven published scientific studies
- Five time winner of a Vity Award including the last 4 consecutive years!
- Three different dosages:
 - 150 and 300 mg capsules
 - 400 mg softgel



SUPPLEMENT FACTS		
Serving Size: 1 Capsule		
Servings Per Container: 60		
Amount Per 1 Capsule (Veg):		%DV
French Grape (<i>Vitis vinifera</i>)		
Seed Extract (VX1®)	150 mg	**
Standardized to contain $\geq 99\%$ polyphenols and $\geq 80\%$ OPCs (Tannin Free)		
** Daily Value (DV) not established		

Recommendations: 1 capsule or softgel, one to three times daily.