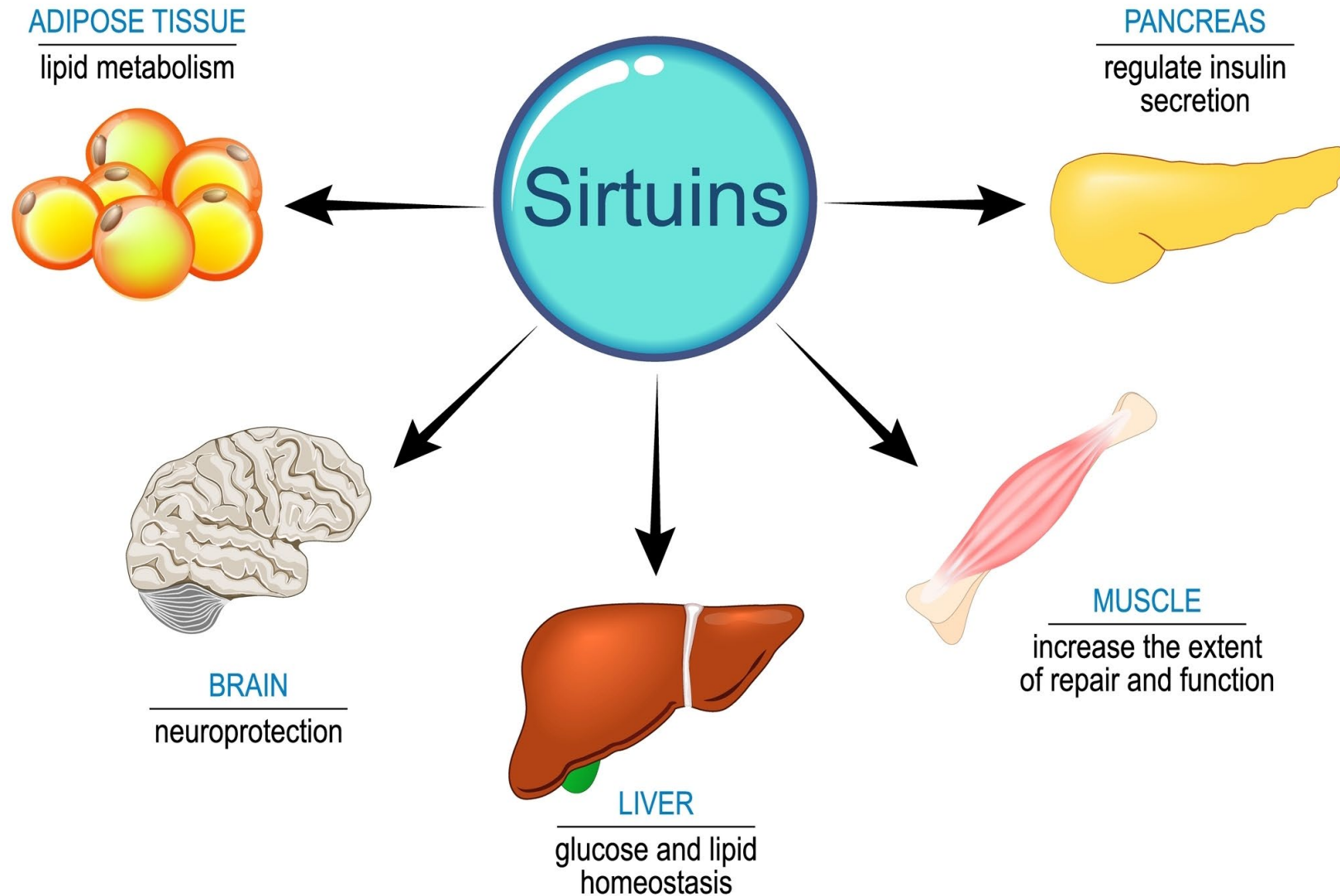




# New Product Introduction

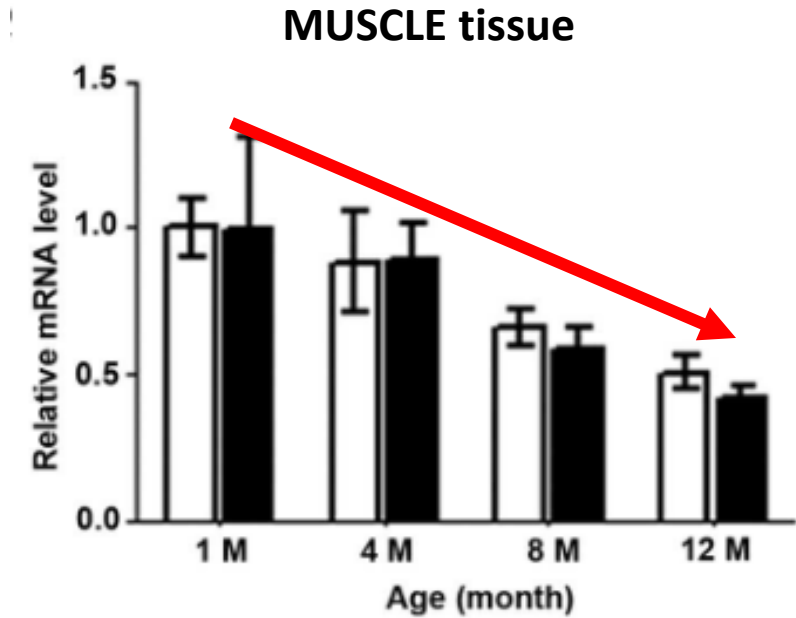
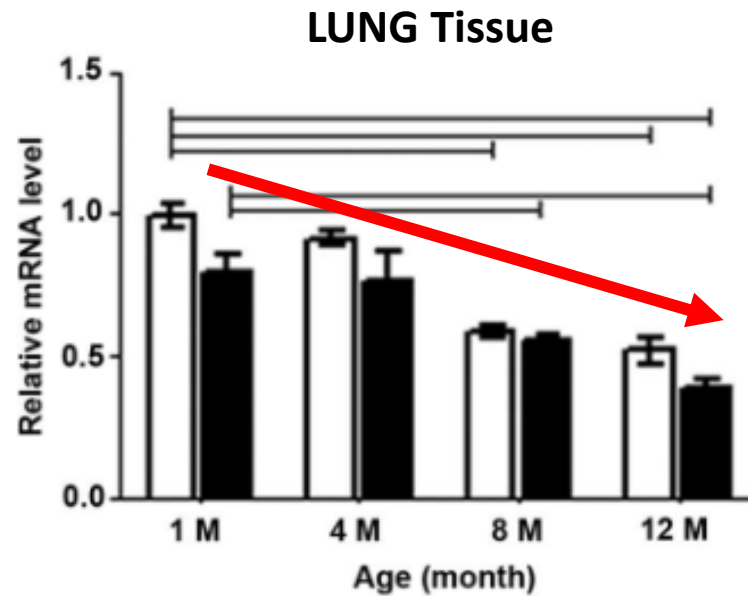
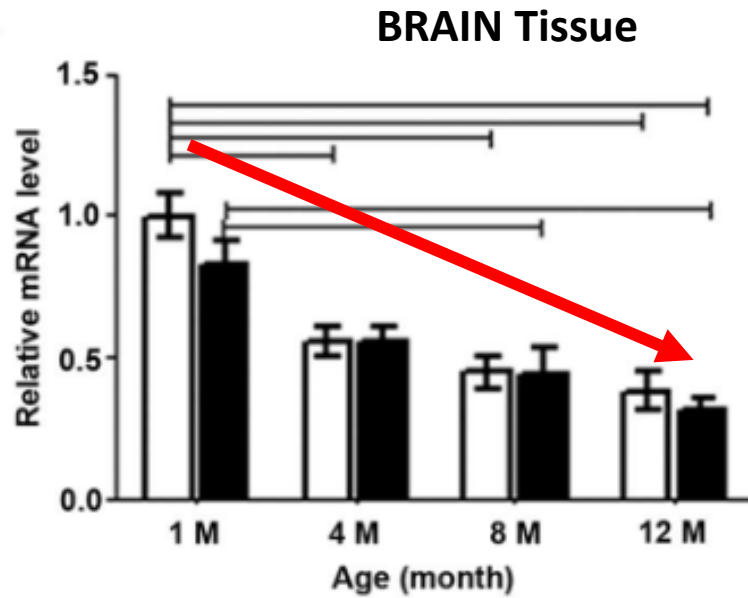




# Sirtuins for Longevity

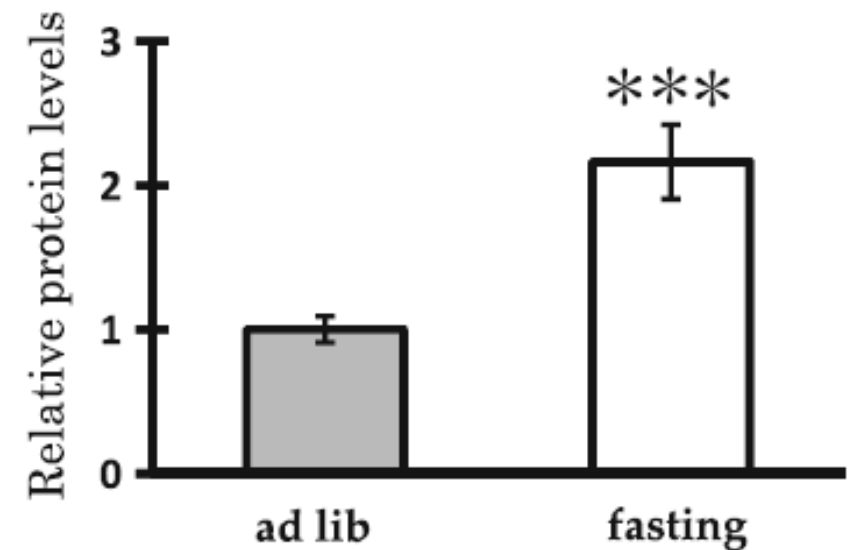
# SIRT1 Levels Decline with Age

Animal model of accelerated aging.  
SIRT1 levels decline 30-40% with age.



# How can SIRT1 be activated?

- Research in different biological models of aging shows that **restricting calories** can increase lifespan by as much as 30% -50%
- Why?
- Calorie restriction increases SIRT1
- Animal model: 24 hour fast doubled SIRT1 levels
- In a study of young, overweight adults, 25% calorie restriction increased SIRT1 **113%** [mitochondrial muscle tissue]



Animal model, unrestricted access to food versus 24 hour fast

# GammaSorb

- Resveratrol, Curcumin, and Quercetin are recognized as being difficult for the body to absorb
  - Resveratrol has some absorption issues and metabolizes quickly
  - Curcuminoids absorption can be so low as to be undetectable
  - Quercetin absorption varies from 3-17%
- Gamma cyclodextrin improves absorption of poorly soluble nutrients – resveratrol in a complex with gamma cyclodextrin also showed preserved antioxidant ability

# Resveratrol Complex

- **Concentrated, active form of resveratrol**, plus enhanced absorption BCM-95<sup>®</sup> curcumin and plant-sourced quercetin
  - All have potent **antioxidant activity** to protect against free radicals\*
  - All support activity of **SIRT1 (sirtuin-1)**, also known as the “longevity gene”\*
- **Ideal for cellular health and longevity, cardiovascular health, and healthy aging\***
- **With Gammasorb<sup>®</sup> for enhanced absorption**

Recommendations: 1 capsule daily.

\*These statements have not been evaluated by the Food and Drug Administration. This product is not intended to diagnose, treat, cure or prevent disease.



## SUPPLEMENT FACTS

Serving Size: 1 Capsule

Servings Per Container: 60

Amount Per 1 Capsule (Veg):	%DV
Proprietary Complex	250 mg **
Containing Trans-Resveratrol [from Japanese knotweed ( <i>Polygonum cuspidatum</i> ) roots], Curcumin ( <i>Curcuma longa</i> ) Rhizome Extract (BCM-95 <sup>®</sup> /Curcugreen <sup>®</sup> ) enhanced with turmeric essential oil and standardized for curcuminoid complex (curcumin, demethoxycurcumin and bisdemethoxycurcumin), Quercetin [from Japanese pagoda tree ( <i>Sophora japonica</i> ) flower buds]	

\*\*Daily Value (DV) not established.

# Build an Anti-Aging Protocol

