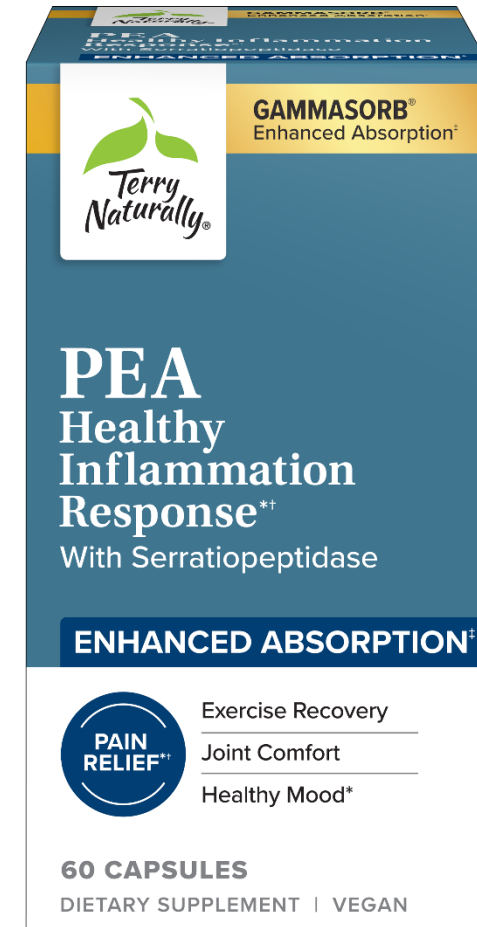


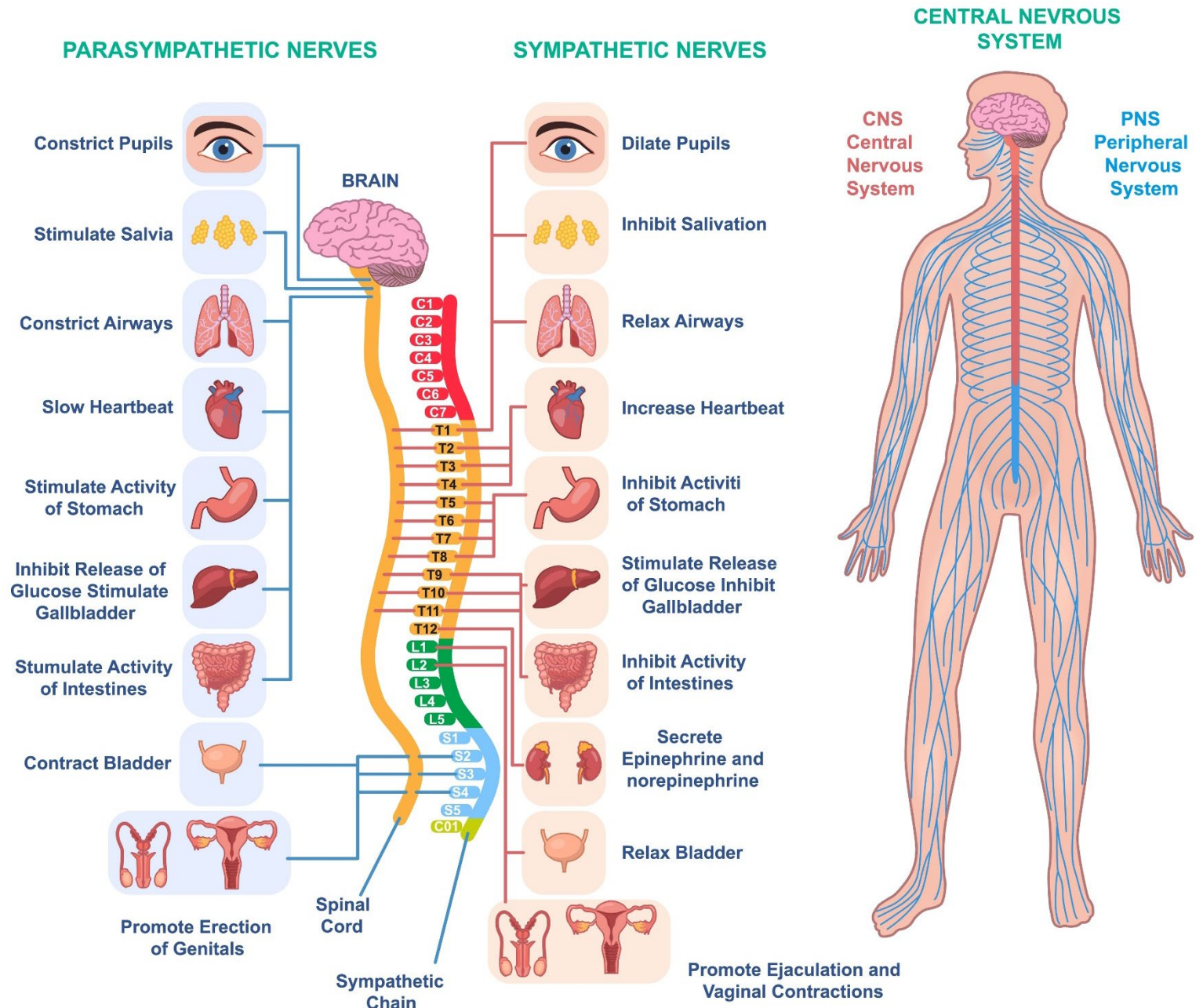
Support for Nerve Health



Quick Review: Nervous System

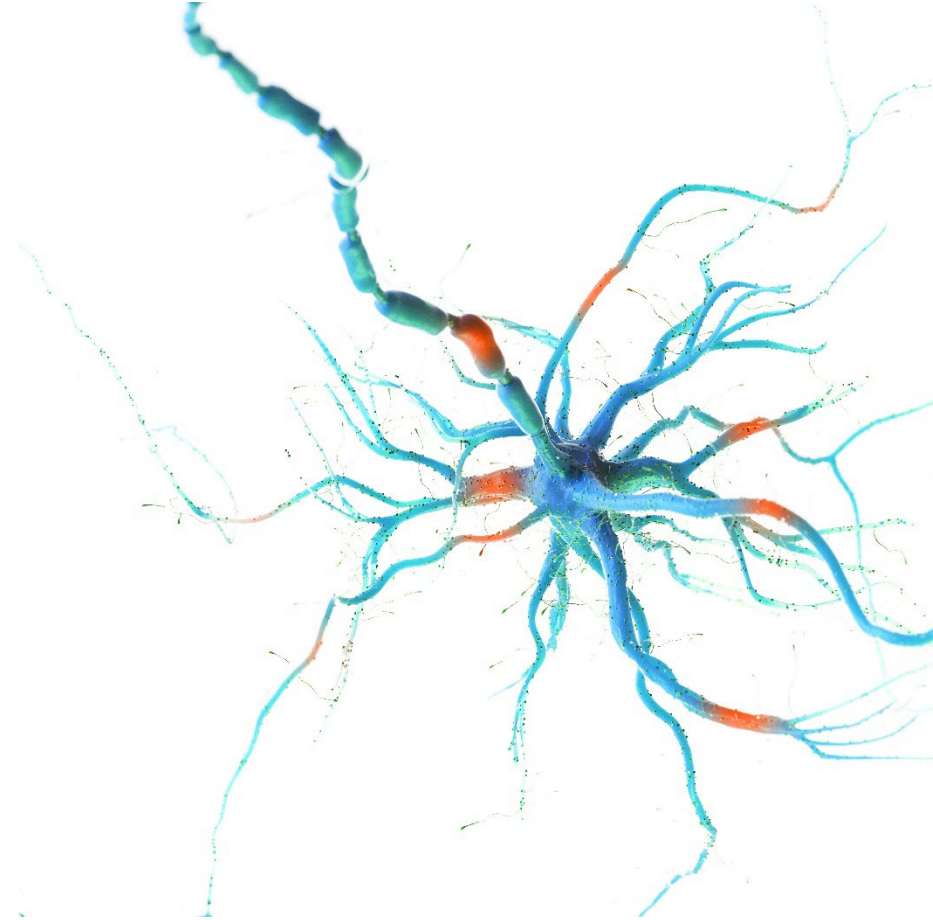
Nerves send electrical signals that enable you to

- Feel sensations
- Move muscles
- Think

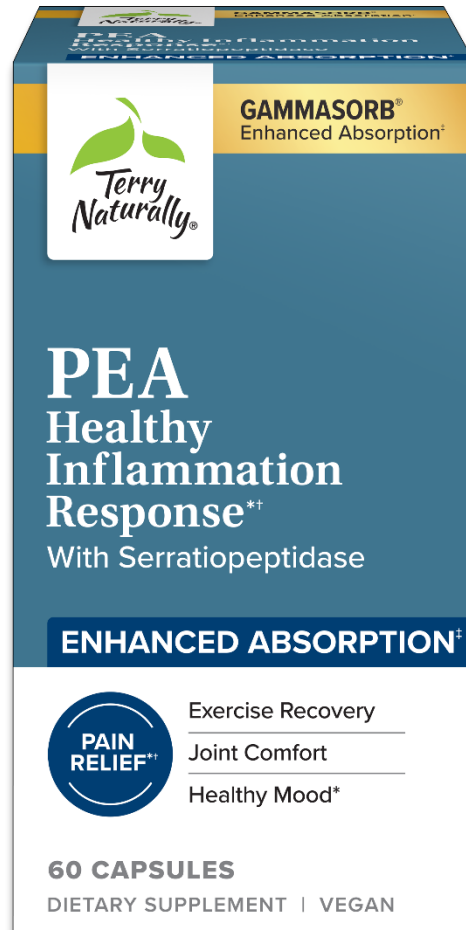


What Damages the Nerves?

- High blood sugar
- Trauma/Inflammation
- Poor nutrition: lack of B vitamins and/or inability to convert B vitamins to active form
- Infections
- Medications
- Autoimmune diseases
- Toxic chemicals
- Cancer
- Pressure and compression: trauma, poorly fitting splints or crutches, carpal tunnel syndrome, tumors



Step 1



PEA

- Combination of ingredients for an active life
 - PEA (palmitoylethanolamide) shown in clinical studies to relieve pain
 - Serratiopeptidase reduces inflammation
- Together, provide support for
 - Mobility and joint health
 - Mood
 - Exercise recovery
 - Microcirculation
 - Mental function and cognitive health
- Featuring GammaSorb for enhanced absorption

Recommendations: 1 or 2 capsules daily.

† Occasional muscle pain or inflammation due to exercise or overuse

*These statements have not been evaluated by the Food and Drug Administration. This product is not intended to diagnose, treat, cure or prevent any disease.



SUPPLEMENT FACTS

Serving Size: 2 Capsules

Servings Per Container: 30

| Amount Per 2 Capsules (Veg): | | %DV |
|------------------------------|--------|-----|
| Palmitoylethanolamide (PEA) | 600 mg | ** |
| Serratiopeptidase | 20 mg | ** |

**Daily Value (DV) not established.



Healthy Feet & Nerves

*supports healthy nerve function in the feet and throughout the body**

- **Supports key areas for healthy nerve function***
 - Blood sugar metabolism*
 - Circulation*
- **Bioactive Bs and Chelated minerals**
 - Active B6, B12 and folate – no conversion by the liver necessary
 - Mineral chelates for optimal absorption
- **High dose alpha lipoic acid**
 - 600 mg per 4 capsules
 - Clinically studied dosage level

Recommendations: 2 capsules twice daily.

*These statements have not been evaluated by the Food and Drug Administration. This product is not intended to diagnose, treat, cure or prevent any disease.



SUPPLEMENT FACTS

Serving Size: 2 Capsules
Servings Per Container: 30

| Amount Per 2 Capsules (Veg): | %DV |
|--|----------------------------|
| Thiamin (B1) (from thiamin HCl) | 25 mg 2,083% |
| Riboflavin (vitamin B2) | 25 mg 1,923% |
| Niacin (as niacinamide) | 10 mg 63% |
| Vitamin B6 (as pyridoxal-5-phosphate) | 30 mg 1,765% |
| Folate (from (6S)-5 methyltetrahydrofolic acid, glucosamine salt) [†] | 425 mcg DFE (250 mcg) 106% |
| Vitamin B12 (as methylcobalamin) | 500 mcg 20,833% |
| Biotin (as d-biotin) | 1,000 mcg 3,333% |
| Pantothenic Acid (from d-calcium pantothenate) | 200 mg 4,000% |
| Zinc (from TRAACS™ zinc glycinate chelate) | 10 mg 91% |
| Chromium (from TRAACS™ chromium nicotinate glycinate chelate) | 200 mcg 571% |
| Alpha Lipoic Acid | 300 mg ** |
| Boswellia (<i>Boswellia serrata</i>) Gum Resin Extract (BOS-10®) standardized to contain ≥ 70% total organic and boswellic acids with AKBA ≥ 10%, with ≤ 5% beta-boswellic acids | 100 mg ** |
| Benfotiamine | 50 mg ** |

**Daily Value (DV) not established.

[†]US Patent No. 7,947,662

Step 2



Red Sage Plus

- **Combination of two ultra-clean ingredients from hydroponic cultivation:**
 - HRS65 red sage [danshen]
 - HRG80 red ginseng
- **Whole root, not an extract**
- **Verified never adulterated, grown without pesticides**
- **Heart-focused formula**
 - Healthy blood flow and circulation
 - Healthy blood vessels and arteries *

Recommendations: 1 capsule daily. May take one capsule, two to four times daily, for additional support.

*These statements have not been evaluated by the Food and Drug Administration. This product is not intended to diagnose, treat, cure or prevent any disease.



| SUPPLEMENT FACTS | | |
|---|--------|-----|
| Serving Size: 1 Capsule | | |
| Servings Per Container: 30 | | |
| Amount Per 1 Capsule (Veg): | | %DV |
| Red Sage (<i>Salvia miltiorrhiza</i>) Root Powder (HRS65™) | 100 mg | ** |
| Korean Red Ginseng (<i>Panax ginseng</i>) Root Powder (HRG80™) containing rare, noble ginsenosides | 100 mg | ** |
| **Daily Value (DV) not established. | | |



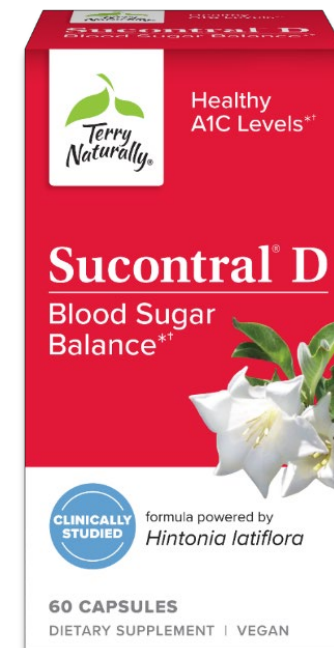
Sucontral[®] D

- Terry Naturally[®] exclusive – nothing else like it on the market
- Clinically proven: over 70 years of research
- Side benefits: supports healthy cholesterol and triglyceride balance^{*†}
 - Healthy insulin function
 - Healthy A1C levels[†]
 - Carbohydrate metabolism
 - Blood sugar levels^{*†}

[†]Supports healthy levels already within normal range

Recommendations: 1 capsule, twice daily. May increase to 1 capsule, three times daily for advanced support.

*These statements have not been evaluated by the Food and Drug Administration. This product is not intended to diagnose, treat, cure or prevent any disease.



SUPPLEMENT FACTS

Serving Size: 1 Capsule

Servings Per Container: 60

| Amount Per 1 Capsule (Veg): | | %DV |
|---|----------------------------------|------|
| Vitamin C (as ascorbic acid) | 30 mg | 33% |
| Vitamin E (as d-alpha tocopherol acetate) | 5 mg (7.5 IU) | 33% |
| Thiamin (Vitamin B1) (as thiamin HCl) | 0.7 mg | 58% |
| Riboflavin (Vitamin B2) | 0.8 mg | 62% |
| Vitamin B6 (as pyridoxine HCl) | 1 mg | 59% |
| Folate | 170 mcg DFE (100 mcg folic acid) | 43% |
| Vitamin B12 (as cyanocobalamin) | 0.5 mcg | 21% |
| Biotin | 50 mcg | 167% |
| Zinc (from zinc acetate) | 5 mg | 45% |
| Chromium (from chromium chloride) | 25 mcg | 71% |

Copalchi (*Hintonia latiflora*) Bark Extract (2-4:1) 100 mg
providing 20 mg of polyphenols

**Daily Value not established